



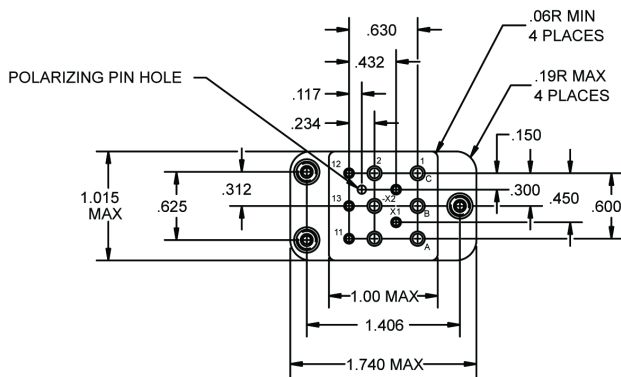
**Basic socket series designation for:**

Series KD

**Designed to the standards and requirements of:**

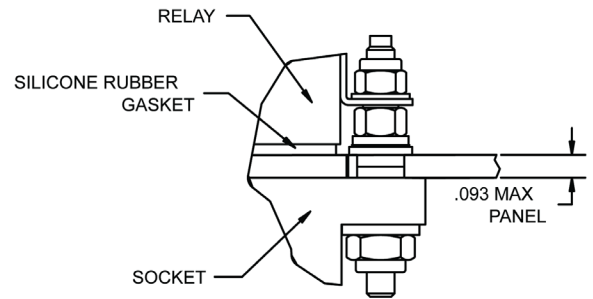
MIL-S-12883

### SOCKET DRAWING



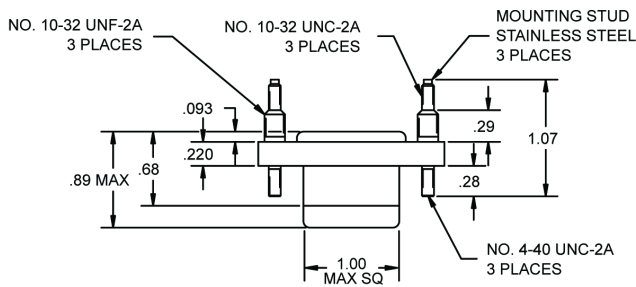
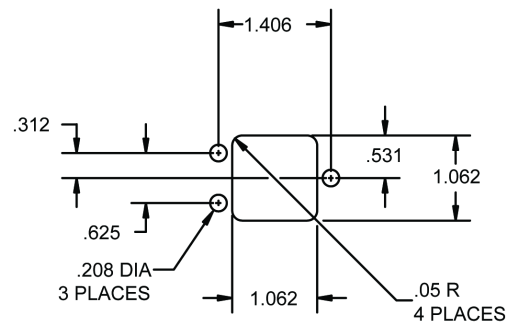
### HARDWARE MOUNTING

#### MOUNTING DETAIL 3 PLACES



### MOUNTING DIMENSIONS

#### SUGGESTED MOUNTING HOLE LAYOUT



## GENERAL CHARACTERISTICS

1. Supplied with mounting hardware and No. 12 contacts and crimp for power terminals; No. 16 contacts and crimp for coil terminals.	
2. Standard tolerances	.xx ± .01; xxx ± .005
3. Weight	.132 lbs. max
4. Temperature range	-70° C to +125° C